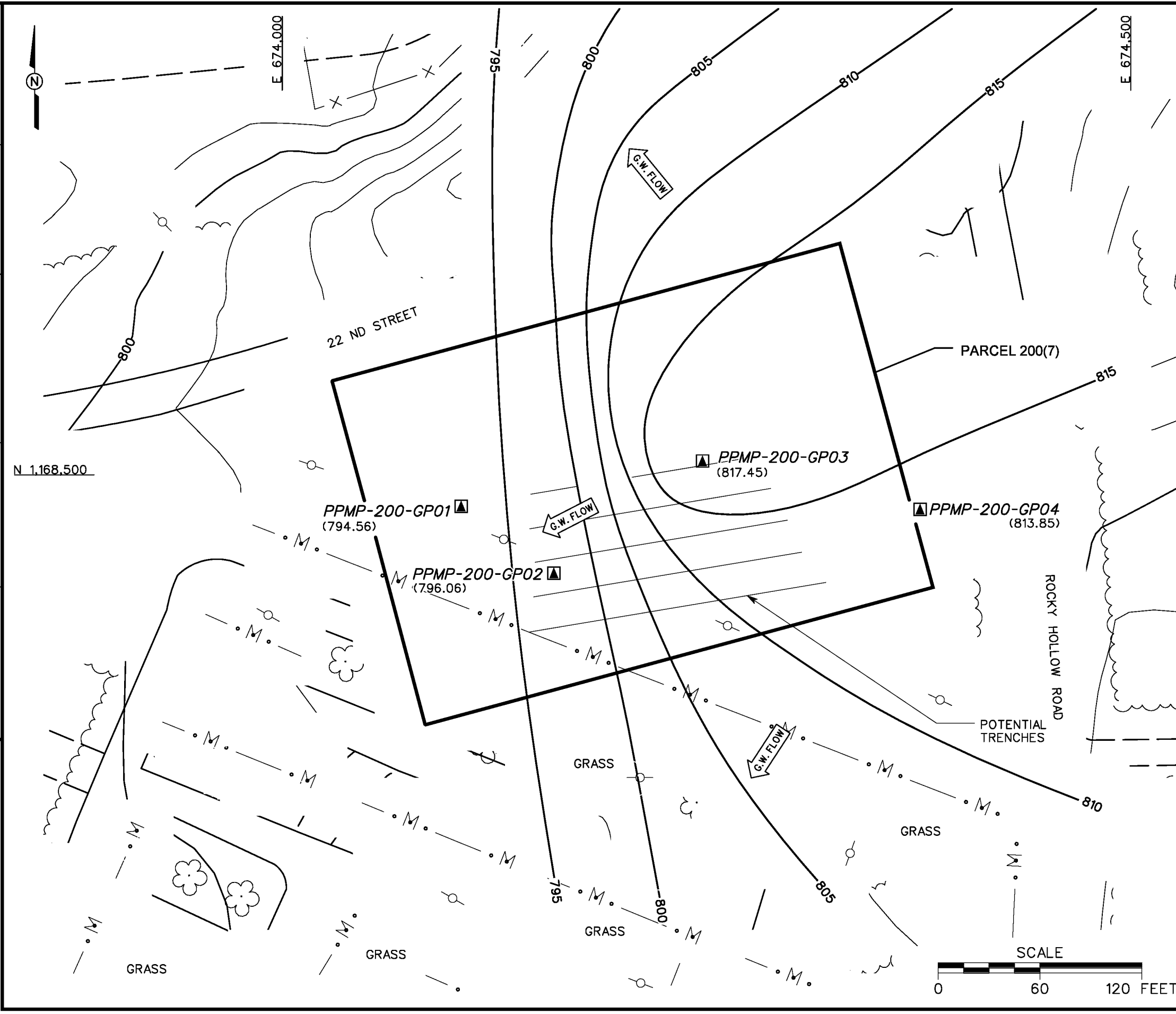


DBILLING  
c:\cadd\design\774645es.581  
03/27/01 10:59:47 AM  
STARTING DATE: 8/03/00  
DRAWN BY: D. BILLINGSLEY  
DATE LAST REV.:  
DRAWN BY:  
DRAFT, CHECK, BY: S. MORAN  
ENGR, CHECK, BY: S. MORAN  
INITIATOR: D. LAMB  
PROJ. MGR.: J. YACOUB  
PROJ. NO.: 774645  
DWG. NO.: ...774645es.581



- LEGEND**
- UNIMPROVED ROADS AND PARKING
  - PAVED ROADS AND PARKING
  - BUILDING
  - TOPOGRAPHIC CONTOURS (CONTOUR INTERVAL - 5 FOOT)
  - GROUNDWATER ELEVATION CONTOUR (DASHED WHERE INFERRED)
  - (813.85) GROUNDWATER ELEVATION (MSL) (MARCH 13, 2000)
  - G.W. FLOW GROUNDWATER FLOW DIRECTION
  - TREES / TREELINE
  - PARCEL BOUNDARY
  - UTILITY POLE
  - BRIDGE
  - CULVERT WITH HEADWALL
  - SURFACE DRAINAGE / CREEK
  - MANMADE SURFACE DRAINAGE FEATURE
  - GROUNDWATER, SURFACE AND SUBSURFACE SOIL SAMPLE LOCATION

**FIGURE 4-2**  
**GROUNDWATER ELEVATION MAP**  
**GROUND SCAR WITH TRENCHES**  
**AT DRIVING COURSE**  
**PARCEL 200(7)**

U. S. ARMY CORPS OF ENGINEERS  
MOBILE DISTRICT  
FORT McCLELLAN  
CALHOUN COUNTY, ALABAMA  
Contract No. DACA21-96-D-0018

**IT CORPORATION**  
A Member of The IT Group